

# Bedford Rural Electric Cooperative

A Touchstone Energy® Cooperative 



One of 14 electric cooperatives serving Pennsylvania and New Jersey

## BEDFORD REC

P.O. Box 335  
Bedford, PA 15522  
814-623-5101

Email: [support@bedfordrec.com](mailto:support@bedfordrec.com)  
Website: [www.bedfordrec.com](http://www.bedfordrec.com)

## BOARD OF DIRECTORS

### President & Allegheny Director

Ronald W. Wilkins  
Napier and Harrison Twps.,  
New Paris, Manns Choice and  
Schellsburg Boroughs

### Vice President & PREA Director

Donald E. Hoenstine  
Kimmel and King Twps.

### Secretary

Paul L. Rummel Jr.  
Bedford and Cumberland Valley Twps.

### Treasurer

Reuben R. Lafferty  
Juniata Twp., Bedford County, and  
Allegheny Twp., New Baltimore Borough,  
Somerset County

### Assistant Secretary

Earl W. Garland  
East Providence Twp., Bedford County,  
and Brush Creek Twp., Fulton County

### Assistant Treasurer

Dale R. Sprigg II  
West St. Clair, Pavia, and Lincoln Twps.,  
Pleasantville Borough

### Brian I. Hoover

Monroe and West Providence Twps.,  
Everett Borough

### Troy A. Mickle

East St. Clair Twp., Bedford County

### Travis L. Wigfield

Colerain, Snake Spring and  
South Woodbury Twps.

### Attorney

James R. Cascio

## OFFICE HOURS

Monday through Friday  
7:30 a.m. - 4:00 p.m.

## Cooperative's 85th Annual Meeting



**BROOKS SHOEMAKER**

**THE COOPERATIVE'S 85TH ANNUAL MEETING** will be held Wednesday, April 10, at the Bedford County Fairgrounds, 108 Telegraph Road, just west of downtown Bedford on Business Route 30, which is also West Pitt Street. The fairgrounds are adjacent to the Bedford exit of Interstate 99. Once again, by popular request, we are hosting a drive-thru meeting.

Finding a parking spot will not be a concern at this event, which will be held from 10 a.m. to 1:30 p.m. (Note: Please do not arrive before 10 a.m. to avoid traffic backing up onto Route 30). At any point during those hours, while remaining in your car, members will use the main fairgrounds entrance and follow the marked route. At stops along the way, members will register, pick up an annual report and receive a ballot to vote in the election of directors (if you haven't already voted by mail). Members will also enjoy free refreshments, receive an attendance gift and finally turn in their completed ballot, if voting at the meeting. Registered attendees will also be eligible to win door prizes. Lucky winners will be announced after the meeting.

We want to make voting as convenient as possible, so we offer a variety of ways for members to participate. Around March 15, you will receive a packet in the mail that contains the official annual meeting notice, your registration card and a mail-in ballot. Once the packet is received, you can choose to vote with the mail-in ballot or bring your registration card to the meeting and vote in person. Naturally, you can't vote both ways. If you choose to vote by mail, your ballot must be received by our election vendor **BEFORE April 8**, so please allow sufficient time for postal delivery. Also, if you choose to vote by mail, we still encourage you to attend the meeting.

Each year, the annual meeting is the defining moment for cooperatives across the United States. It presents the opportunity for voting members to democratically control the future of their cooperative. Each member — new or longtime, large or small consumer of electricity — has an equal voice by voting for their member-representatives, the board of directors. What better way to map the future of the organization than by helping to decide who sits on the nine-member board of directors?

Our directors are community-minded individuals with different skill sets. We rely on them to help the cooperative make informed decisions on long-term priorities and investments. Each director lives in the co-op's service area, and we consider them the eyes and ears of the community because they provide their unique perspective on various local issues.

Directors are elected for three-year terms, with three of the nine seats up for election each year. The following page features profiles of the candidates vying for the three director seats. Each was selected by the Nominating Committee.

*Continued on page 16D*

# 2024 DIRECTOR NOMINEES

The following cooperative members have been nominated for the three seats up for election this year on the Bedford Rural Electric Cooperative (REC) Board of Directors. Elections will be held at the Bedford REC Annual Meeting, April 10, at the Bedford County Fairgrounds.

## DISTRICT 2: Ronald W. Wilkins



Ron currently represents District 2 and is president of the board. He is also the cooperative's Allegheny Electric Cooperative, Inc. (Allegheny) board representative and member-delegate. Ron has completed all the necessary training to earn both his Credentialed Cooperative Director (CCD) and Board Leadership certificates.

He and his wife, Hilda, live in Manns Choice and have been Bedford REC members for 48 years. They have two children, Daniel and Becky, and five grandchildren.

A graduate of Bedford High School, he also graduated from the Institute of Computer Management in Pittsburgh.

He served six years in the Army National Guard. Ron retired from the Roaring Spring Blank Book Company after 28 years as the information system manager. He also retired as a school bus contractor for the Bedford Area School District after 48 years of service. Ron is a deacon at Bedford Bible Church, where he also serves as treasurer and teaches Sunday School. He is a member of the bluegrass gospel group, Country Praise, a judge of elections for Harrison Township and a member of the Dr. Roy D. Hoffman Scholarship Committee. He enjoys spending time with family and hunting.

**Candidate's comments:** "I consider it an honor and privilege to serve on behalf of the membership on both the Bedford REC and Allegheny boards."

## DISTRICT 4: Donald E. Hoenstine



Don currently represents District 4 and is vice president of the Bedford REC Board of Directors. He is also the cooperative's Pennsylvania Rural Electric Association (PREA) member-delegate and serves on the PREA board. Don has completed all the necessary training to earn his CCD certificate.

Don was a mechanic and welder for Consolidated Rail Corporation (Conrail) for 25 years before he retired in 2000. He is a graduate of Claysburg-Kimmel High School and has been a Bedford REC member for 48 years.

Don and his wife, Sandi, live in Imler. They have two daughters, Julie and Faith, and three grandchildren. Don served in the Army from 1969 to 1971. A member of Claysburg Bible Church, he currently serves as treasurer. His hobbies and interests include gardening, refinishing furniture, and pitching in to help with various church activities.

**Candidate's comments:** "Because of the many ways power is generated, it is my job and responsibility as a board member to make decisions that are best for the membership. And if re-elected, I will work to provide reliable energy at the best possible cost."

## DISTRICT 8: Brian I. Hoover



Brian represents District 8 on the board and has earned his CCD certificate by completing all the necessary training. A graduate of Chambersburg Area Senior High School, he also attended Shippensburg University, where he received his bachelor's degree in criminal justice. Brian has been a Bedford REC

member for 28 years.

Brian and his wife, Amy, live in Everett. They have two children, Luke and Tyler, and one grandchild, Hayden.

Brian spent 25 years as a state trooper before he retired in 2016. Following his retirement from the State Police, he worked as a government contract investigator for six years before retiring in the fall of 2023. Brian is a deacon and Sunday school teacher at Bedford Bible Church. In his spare time, he enjoys fly fishing and cycling.

**Candidate's comments:** "I find providing governance at the co-op to be both challenging and rewarding. If I am elected to continue as a director, I will endeavor to pursue affordable, safe and reliable electricity for the members of Bedford REC."

# HOW THE ELECTRIC CO-OP WORKS



**1. Member-owners elect board directors.**

**2. Board defines expectations for the co-op's general manager (GM/CEO) and provides policies & strategic goals.**

**3. GM/CEO interprets the board's expectations to create a plan.**



**8. Board reflects on policies and updates them as needed.**

**4. GM/CEO delegates responsibilities to staff who help carry out the plan.**

**Member-owners provide input & feedback to board, GM & staff.**



**6. GM/CEO collects data from staff about their efforts.**



**7. GM/CEO shares results with the board.**



**5. Staff develop and oversee programs to accomplish their tasks.**

**FROM THE GENERAL  
MANAGER & CEO**

*Continued from page 16A*

Despite the Nominating Committee's efforts, a *Penn Lines* article and a billing insert, all aimed at attracting candidates, only three members were interested in being on the ballot. This year, we did not receive any petitions from members requesting to be added to the ballot, and no additional nominations will be accepted during the meeting.

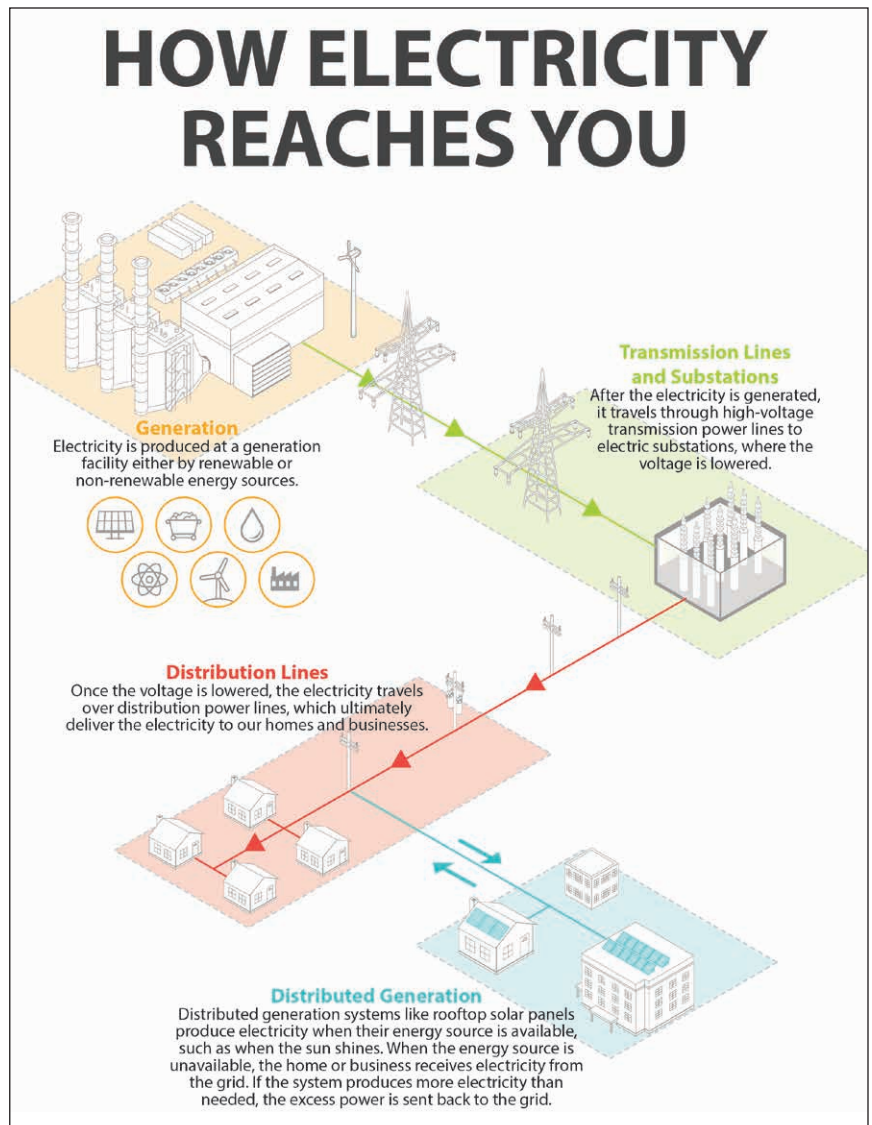
Mark your calendar now and plan to join us April 10. If you cannot join us, please remember to cast your vote by mail. To simplify registration at the meeting, please tear off the registration card and bring it with you. Remember, every vote counts!

**Energy efficiency tip  
of the month**

Lengthen the life of your clothes dryer with regular cleaning. Clean the lint filter after every load, which improves air circulation and safety. Check the lint trap opening to ensure it's clean. Use a vacuum to remove any lint that's fallen inside the opening.

If you use dryer sheets, check the lint filter for residue buildup. Remove any residue with hot water and a nylon brush or toothbrush. Over time, dryer sheets can leave a film on the filter, which can affect the performance of the motor. 🚫

**BROOKS SHOEMAKER**  
GENERAL MANAGER & CEO



## OUTAGE REPORTING

**In case of an outage...**

- 1 Check your fuses or circuit breakers.
- 2 Check with your neighbors, if convenient, to see if they have been affected by the power failure.
- 3 Call the 24-hour number, 814-623-7568, OR call 800-808-2732\* during office hours.

*\*(Please help us save money – only use this number if toll charges apply.)*

Please give the person receiving the call your name as it appears on your bill, your telephone number and your map number, if known. Any specific information about the outage will also be helpful in pinpointing the problem.

**To report an outage call:  
814-623-7568**

*During widespread power outages, many members are calling to report power failures. You may receive a busy signal, or in certain cases, your call may go unanswered. This occurs in after-hours outages when the office is not fully staffed. Please be patient and try again in a few minutes.*